



MRP-L44 Polyclonal Antibody

Catalog No	YP-Ab-03994
Isotype	IgG
Reactivity	Human;Mouse;Rat;Monkey
Applications	WB;IHC;IF;ELISA
Gene Name	MRPL44
Protein Name	39S ribosomal protein L44 mitochondrial
Immunogen	The antiserum was produced against synthesized peptide derived from human MRPL44. AA range:221-270
Specificity	MRP-L44 Polyclonal Antibody detects endogenous levels of MRP-L44 protein.
Formulation	Liquid in PBS containing 50% glycerol, 0.5% BSA and 0.02% sodium azide.
Source	Polyclonal, Rabbit,IgG
Purification	The antibody was affinity-purified from rabbit antiserum by affinity-chromatography using epitope-specific immunogen.
Dilution	Western Blot: 1/500 - 1/2000. Immunohistochemistry: 1/100 - 1/300. Immunofluorescence: 1/200 - 1/1000. ELISA: 1/40000. Not yet tested in other applications.
Concentration	1 mg/ml
Purity	≥90%
Storage Stability	-20°C/1 year
Synonyms	MRPL44; 39S ribosomal protein L44; mitochondrial; L44mt; MRP-L44
Observed Band	36kD
Cell Pathway	Mitochondrion .
Tissue Specificity	Uterus,
Function	function:Component of the 39S subunit of mitochondrial ribosome.,similarity:Contains 1 DRBM (double-stranded RNA-binding) domain.,similarity:Contains 1 RNase III domain.,
Background	Mammalian mitochondrial ribosomal proteins are encoded by nuclear genes and help in protein synthesis within the mitochondrion. Mitochondrial ribosomes (mitoribosomes) consist of a small 28S subunit and a large 39S subunit. They have an estimated 75% protein to rRNA composition compared to prokaryotic ribosomes, where this ratio is reversed. Another difference between mammalian mitoribosomes and prokaryotic ribosomes is that the latter contain a 5S rRNA. Among different species, the proteins comprising the mitoribosome differ greatly in sequence, and sometimes in biochemical properties, which prevents easy recognition by sequence homology. This gene encodes a 39S subunit protein. [provided by RefSeq, Jul 2008],



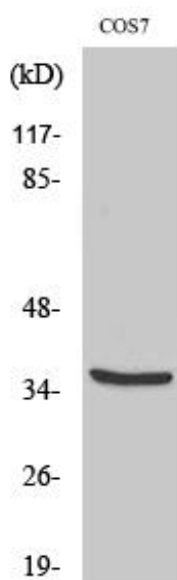
matters needing attention

Avoid repeated freezing and thawing!

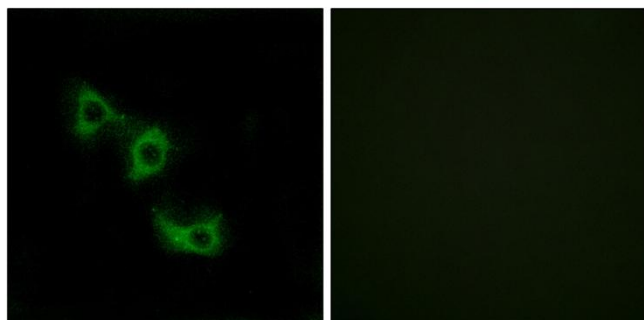
Usage suggestions

This product can be used in immunological reaction related experiments. For more information, please consult technical personnel.

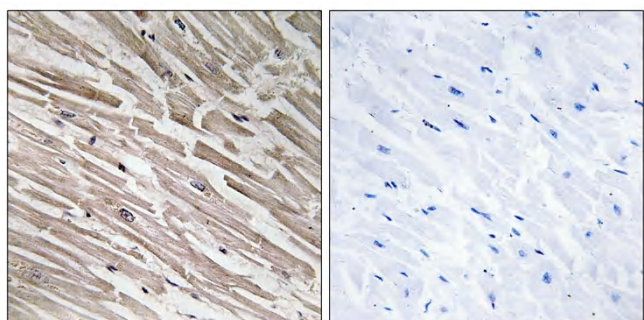
Products Images



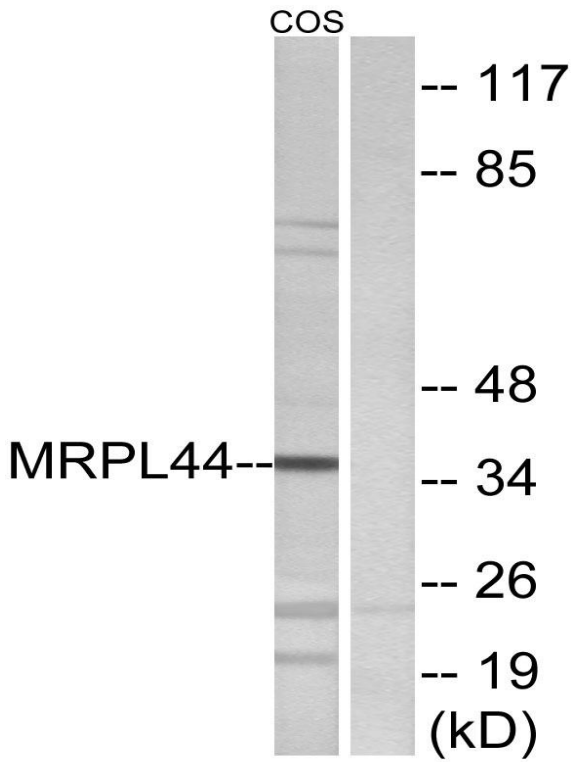
Western Blot analysis of various cells using MRP-L44 Polyclonal Antibody



Immunofluorescence analysis of HUVEC cells, using MRPL44 Antibody. The picture on the right is blocked with the synthesized peptide.



Immunohistochemistry analysis of paraffin-embedded human heart tissue, using MRPL44 Antibody. The picture on the right is blocked with the synthesized peptide.



Western blot analysis of lysates from COS7 cells, using MRPL44 Antibody. The lane on the right is blocked with the synthesized peptide.